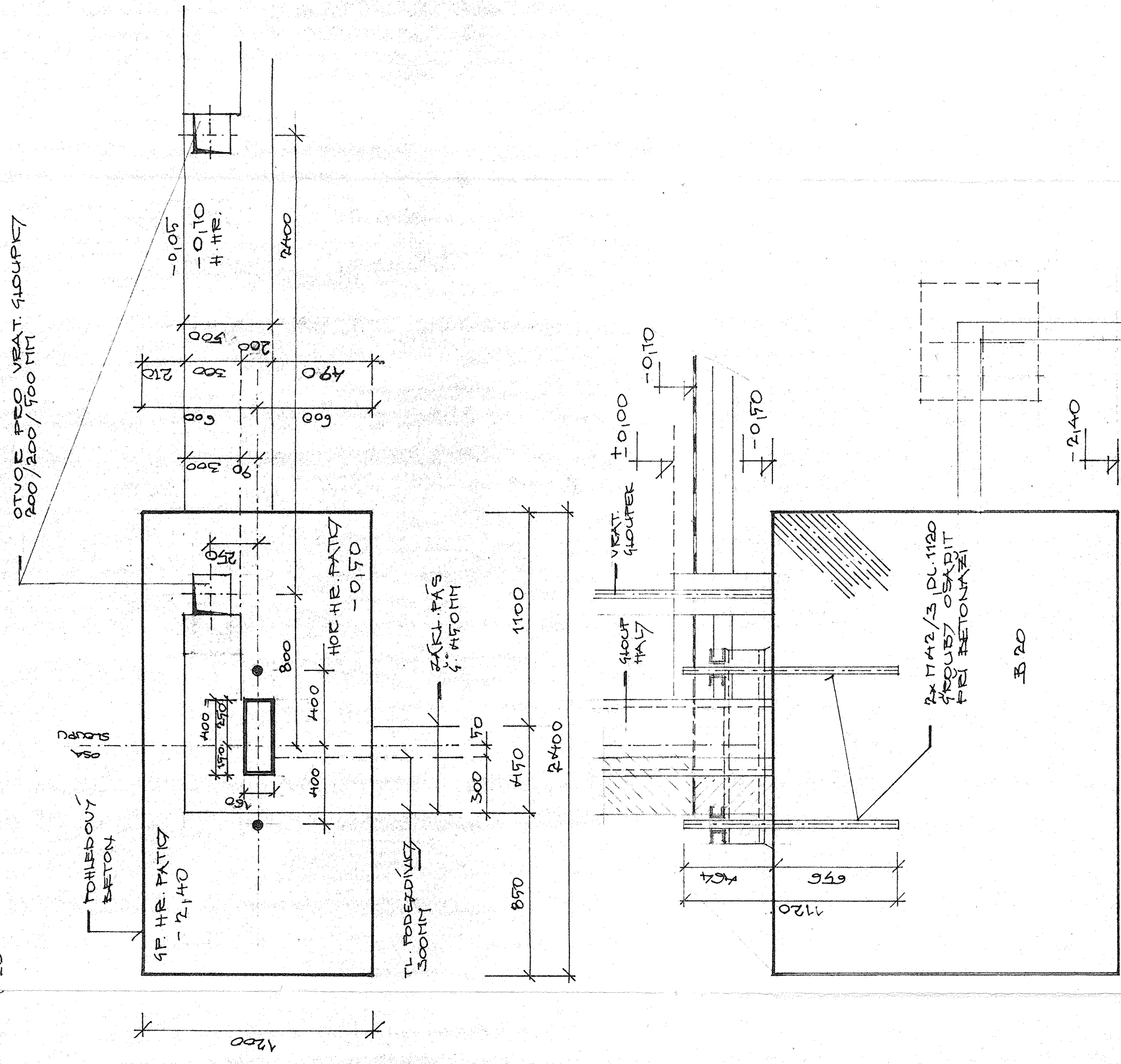
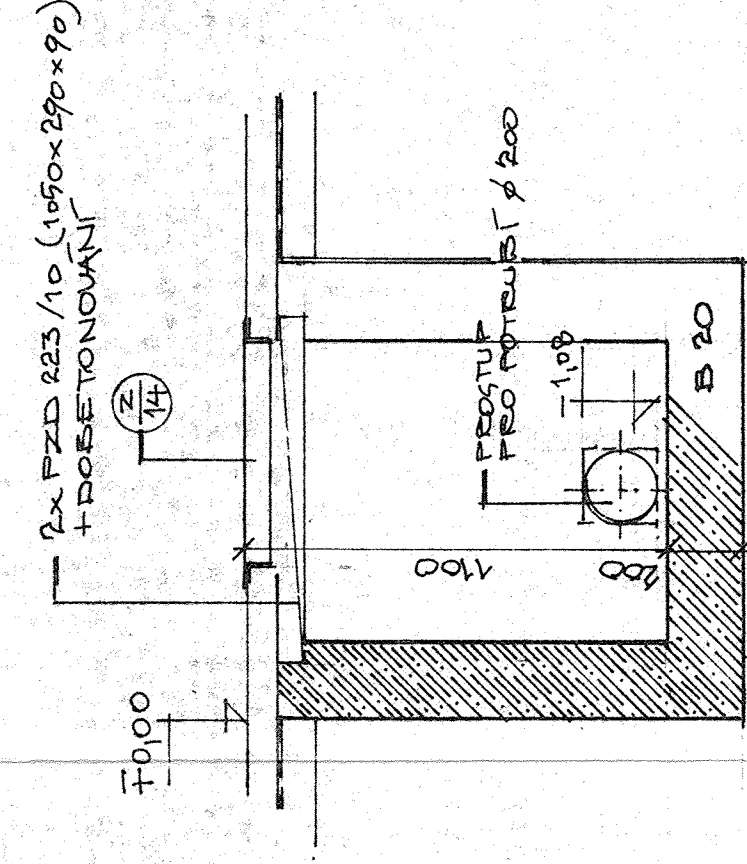


PUDORYS PATKY 2400/1200 V ŘADÁCH 8a10 A OSÁCH 1, II, III, IV, V

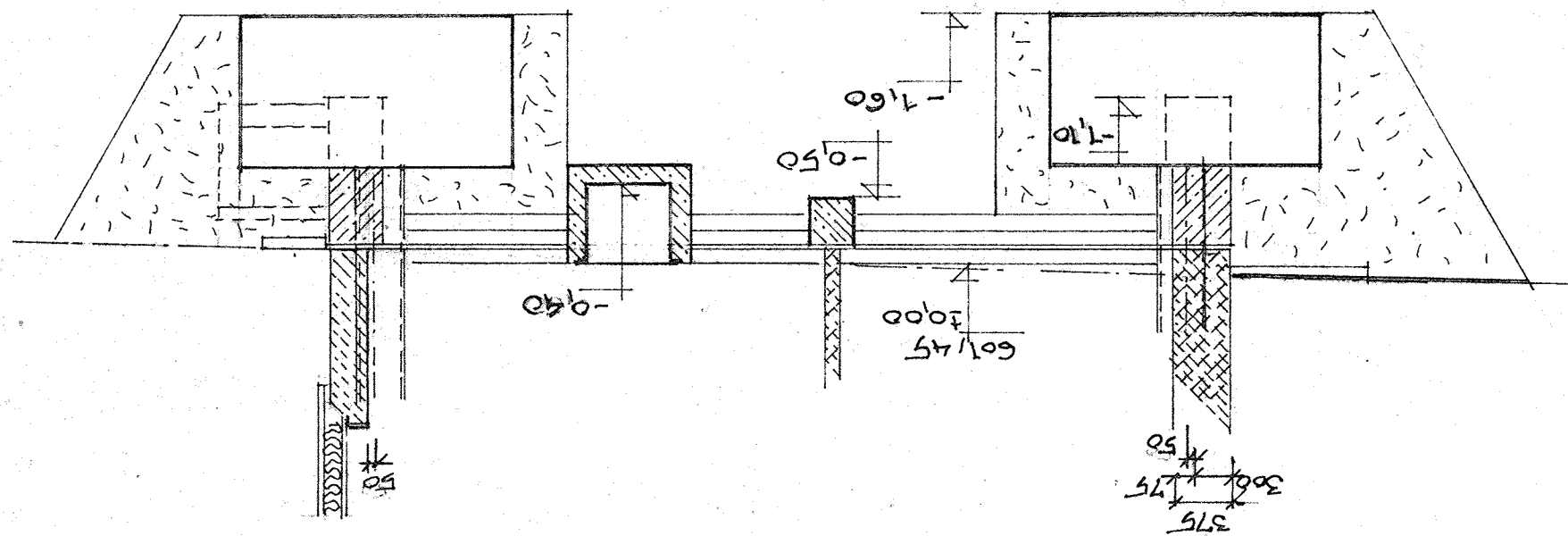
1.20



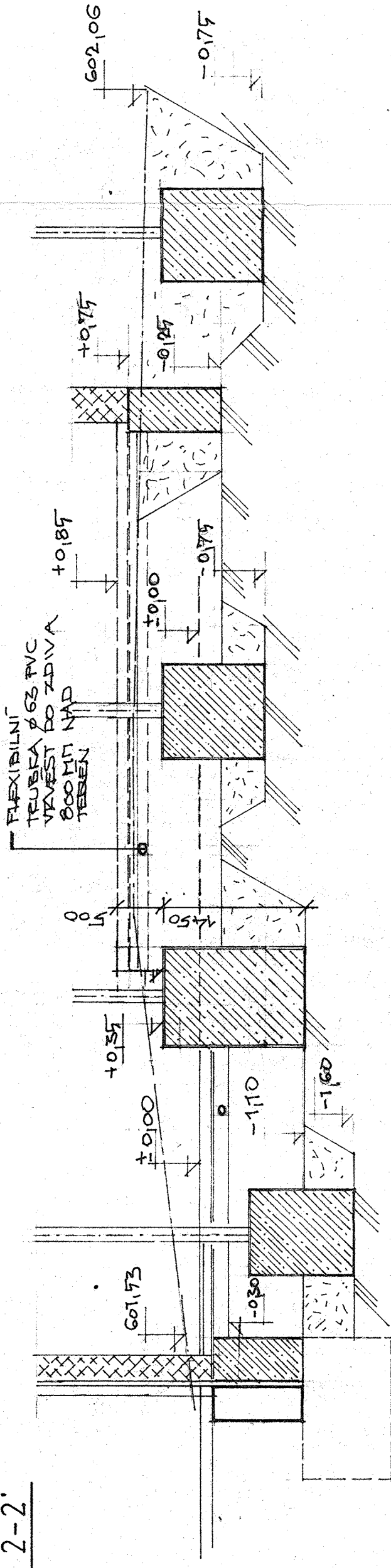
ŘEZ REVISNÍ ŠACHTOU



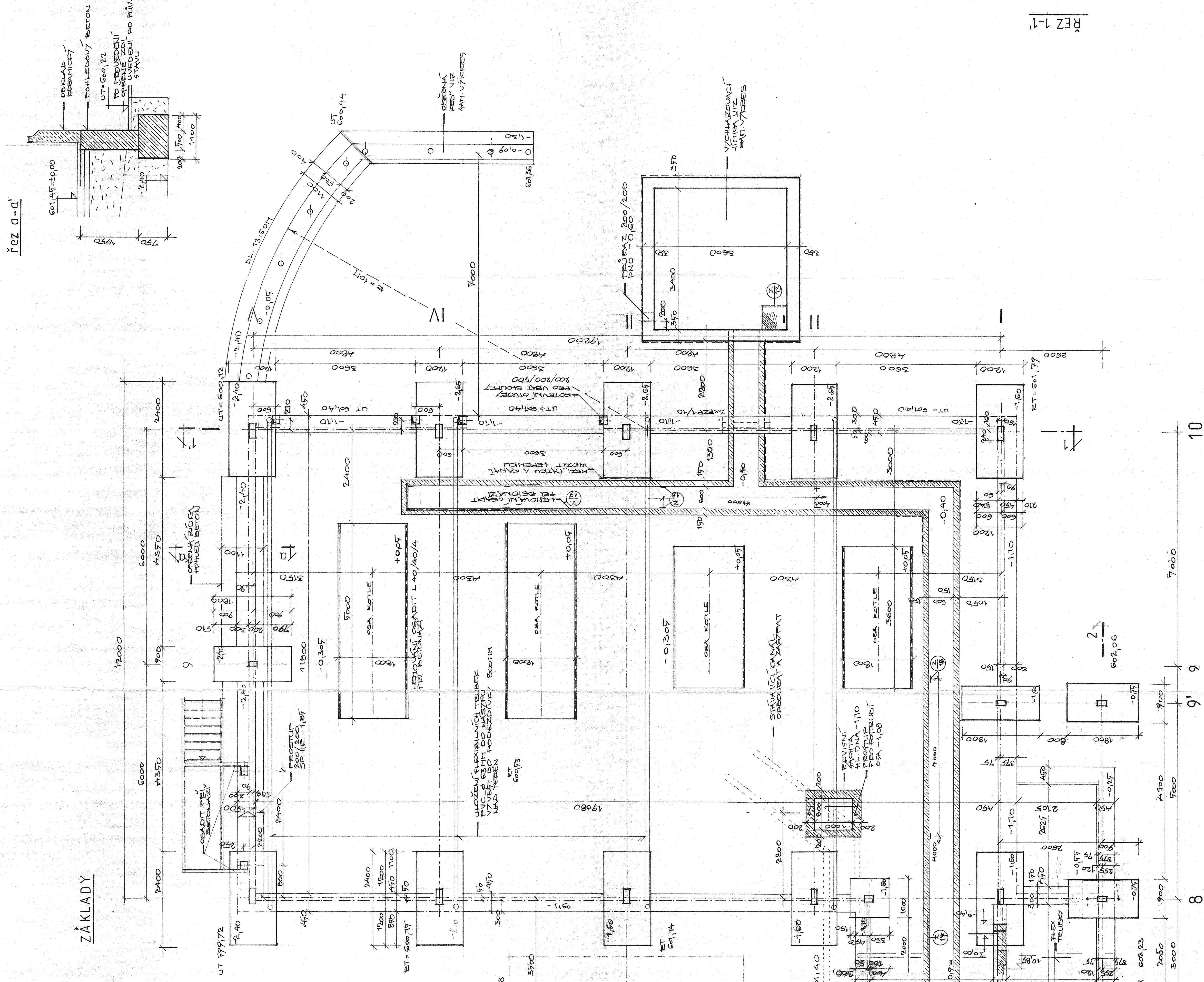
REV 3-3'



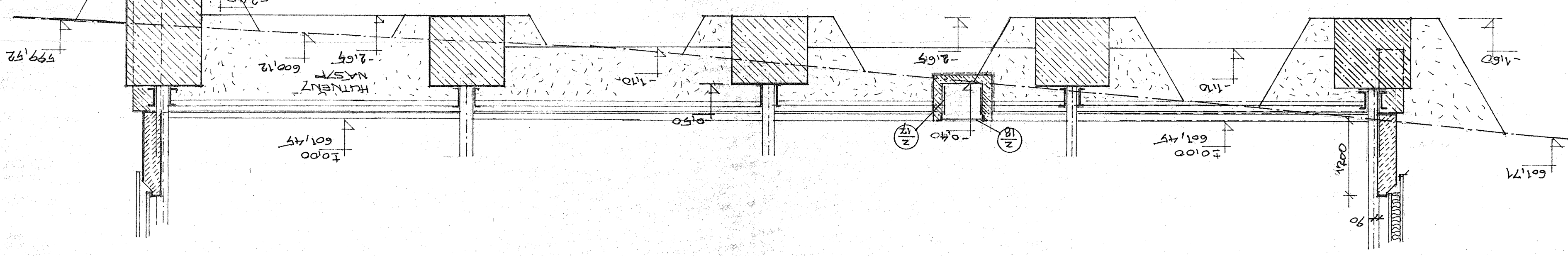
ŘEZ 2-2:



# ZÁKLADY

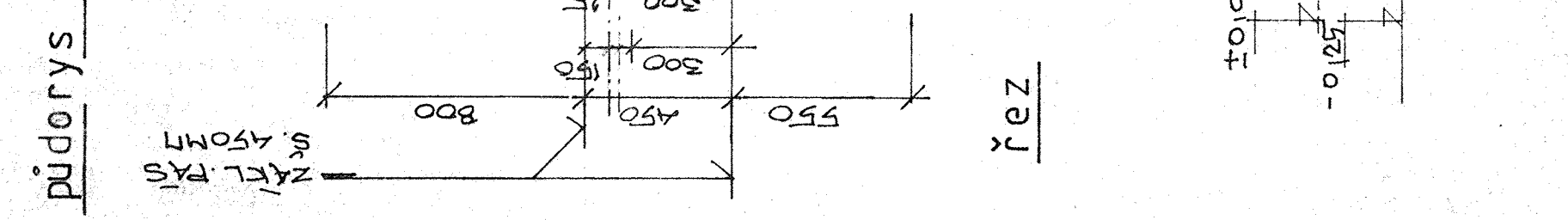


REZ 1-1'



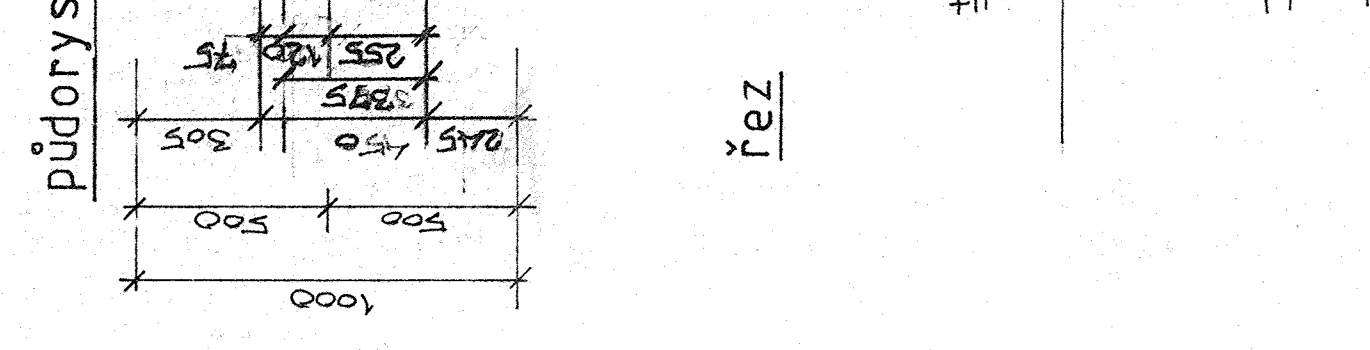
PŮDORYS PATKY 1800/900  
V ŘADÁCH D8,9' 9 A OSÁCH 1, V  
MEŘ. 1:20

MEMO: 7:20



PUDŮRYS PATKY    1000   1000

V ŘADÁCH D, C A OSÁCH 7a,8



## ZÁKLADY

MEH.

WYKRI

[illegible]